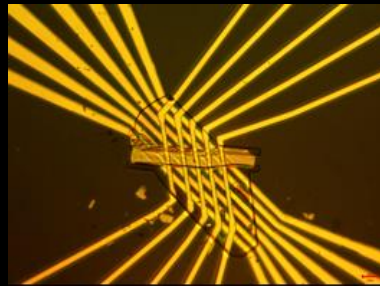


# Quantum - classical interface

- Ultrafast (ps), low-dissipation, low-temperature CDW memory for cryogenic superconducting computing

CDW memory



RSFQ device (HYPRES)



- Interface to Rapid Superconducting Flux Quantum processors
- Interface to topological qubits (Majorana states)

Vaskivskiy, I. et al. Fast electronic resistance switching involving hidden charge density wave states. **Nat Comms** 7, 11442 (2016).